



September 2006

The Lantern

The Newsletter of the Mother Lode Section of IESNA



New Technologies in Architectural Lighting

As we welcome back another exciting year for the Mother Lode Section of IESNA, please join us as we recognize last year's Board of Managers, recognize a few of (our many) outstanding members, and welcome this year's Board of Managers.

For our technical presentation, Kevin "Fuzzy" Furry of LED Effects will be speaking on new technologies in architectural lighting. LED Effects, Inc. partners with renowned designers, architects, and product developers around the world creating innovative solid state lighting systems using LEDs for the largest and most prestigious projects. Their experience, along with their partners' award-winning project designs, combines the advantages of LED technologies with an unlimited variety of digital control technology to produce lighting designs and effects that challenge the imagination.



Date

Wednesday, September 20, 2006

TIME

Board Meeting	5:00-6:00 PM
Social	6:00-6:30 PM
Dinner Served and awards ceremony	6:30 PM
Presentation	7:00 PM

LOCATION

Cattlemen's
12409 Folsom Blvd., Rancho Cordova
(near Highway 50 and Hazel Ave.)
916-985-3030

Please make your reservations by 3:00 PM
Friday, September 15, Miguel Castellanos,
916-570-1576 mac@ecomeng.com

ADMISSION

Full-time student	\$10
Member w/Reservation	\$25
Non-member w/ Reservation and member no-reservation	\$30
Non-member no-reservation	\$35

Please note: Because we are charged, we must bill for reservations made but not kept.

MENU: Teriyaki Chicken, Prime Rib, Grilled Pacific Salmon, vegetarian available upon request.

When registering, please let Miguel know your menu selection

Please share this Newsletter in your office

Prez Sez

Welcome to another year in the Motherlode Section! Your newly elected board held a summer planning meeting in August and we have a lot of great things in store for this year. There are many exciting things happening in the lighting industry. New products, improved light sources, and changes in regulations inspire and challenge lighting professionals in creating new lighting designs.

It is a great honor to be selected to serve as President of the Motherlode Section for 2006-2007. I have the distinction to follow Connie Buchan and Tim Welch in leading our Section. This legacy of leadership and vision permeate every aspect of the Motherlode. Truly, the strength of the Motherlode Section is found in its members. We are fortunate to have so many dedicated and hard working people who volunteer their time to make a difference in our industry and community. From Mark Crume's leadership for our educational programs to Gary Flamm's tireless work as Editor for the Lantern we have valuable contributors in our midst.

The coming year brings new opportunities and challenges that require much work. My grandmother Rachel often said to me "Many hands make light work." We can accomplish much more, with less effort when we all participate. Articles for the Lantern, helping to sign-in students at an IES class, finding great speakers for our

meetings, submitting entries for IIDA awards, teaching an IES class and other countless tasks are small but very valuable areas where we need your help. Please contact your committee and board members. Volunteer for a small (or large) task and lend your hands to lighten the load.

John M. Hickman, LC
President 2006-2007
916-412-6995
hickman@hubbell-ltg.com

IIDA Awards

Up to now the Sacramento area has been a bit quiet when it comes to the IIDA awards. Sacramento and the surrounding area is a fast growing metro/urban community with great architecture on the rise. The design community should show the world we are a cultural force to be recognized.

As the IIDA competition chair, I will be posting information in the future to direct those qualified to submit for competition their designs.

Please take a moment to look at the IIDA website.

www.iesna.org/programs/iida.cfm

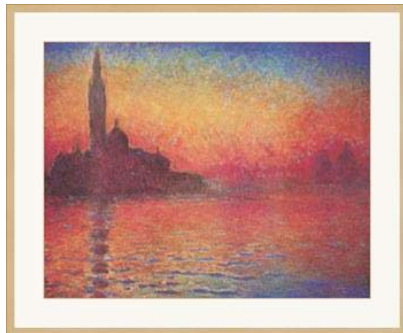
See also a great article about IIDA and how the awards can grow your business:
http://www.iida.org/files/pdf_pers_win03-competitions.pdf

Please feel free to call me with any questions

Thanks,

Doug Coleman
IIDA Chair 2006-2007
929-5111 x 3570
dcoleman@cal-lighting.com

Juan Jose's Tidbits...



Claude Monet



How do you light a masterpiece? How do you light 53 of them? I imagine that these were some of the questions curators at the Palace of the Legion of Honor in San Francisco asked themselves while planning for the current exhibit “Monet in Normandy”. Aside from meeting all the security concerns of all 40 worldwide museums that made the exhibit possible. As with any piece of artwork direct sunlight or direct lamp beam are always a concern due to the UV and infrared degradation of the color pigments, not to mention undesirable glare and shadows.

Claude Monet and paintings are generally considered to be the most outstanding figure and art subjects among Impressionists and their works. The term Impressionism derives from Claude Monet painting “Impression: Sunrise”.

A title was needed in a hurry for the catalogue of the exhibition in 1874. Claude Monet suggested simply Impression, and the catalogue editor, added an explanatory Sunrise. About 1890, he began to paint pictures in series, showing the same subject under various conditions of light and atmosphere.

The exhibit rooms were lighted with track mounted cylinder luminaires mounted high on the ceiling (about 20 feet) with PAR-38 lamps pointed straight down to the floor and about 3 feet from the wall. The luminaires had hammer tone reflectors to one side, to provide a wall wash with a portion of the beam of light. The entire front of the reflector was covered with a fine wire mesh, to minimize glare and avoid direct view of the lamp from the floor level. The oil

paintings were hung about 6'-6" to the top of the frame. The overall ambient light in the exhibit rooms was dim, but uniform at the walls. Uniform levels permitted viewing of all the artwork roughly at the same light conditions, and permitted comparison of all their vivid colors.

If you have not seen this exhibit I highly recommend it. It will be open until mid September. Let's see 53 paintings at roughly \$20 million each... that is \$1 billion. Did I forget to add the roughly \$2 billion worth of art on the permanent exhibits? I think it would make it a complete day of art view

California Title 24

The Energy Commission has begun development of the 2008 update to the Building Energy Efficiency Standards.

The first phase of the development process included a series of public workshops to communicate to the public what changes the Commission is considering, to share the results of related research sponsored by the Commission, utilities, and other stakeholder groups, and to obtain input from the public.

The second phase, starting late 2006, will present draft language for the 2008 Standards based on the discussions in the first phase and will offer opportunities for further public input.

The third phase will be the formal rulemaking for which final proposed language for the 2008 Standards and related documents will be released for public comment for 45 days (this language is referred to as "45-day language"). If needed, substantial changes to 45-day language would subsequently be released as "15-day language." This phase will also include Energy Commission adoption of the final Standards that would take effect in late 2008. The Commission expects this third phase to start mid 2007, with adoption in late 2007. Preparation of the

Residential and Nonresidential Compliance Manuals and approval of updated compliance software will follow Commission adoption. Additional information is posted on the following California Energy Commission web site:

<http://www.energy.ca.gov/title24/2008standards/index.html>

You may sign up on the "List Server" if you would like to be notified electronically about future activities at the Energy Commission:
<http://www.energy.ca.gov/listservers/index.html>

Just for fun

Ole got a new cell phone, and on his way home on the freeway, he called his wife, Lena.

"Hello, Lena. I'm calling you from the freeway on my new cell phone."

Lena says, "Be careful, Ole. The radio says that some nut is driving the wrong way on the freeway."

Ole says, "One nut, my eye. There are hundreds of them!"

From The Good Sports Joke Book by Paul Miller

Yosemite Section...Hear Ye! Hear Ye!

The Yosemite Section has officially been recognized as a sustainable section of the IESNA. The Yosemite Section extends a special thank you to Tom Tolen for his supporting efforts in seeing this initiative through.

In concluding our '05-'06 year, we co-sponsored with the USGBC-Central Valley, an informative presentation on Illuminating the Future: Sustainability and Lighting Design. The presentation was provided by Jeffrey Boynton LC, Ann Kale Associates in Santa Barbara, CA and was well received by the various local architectural, electrical engineering, and consulting communities in Fresno.

On the '06-'07 Agenda:

September:	Lamp and Ballast Update
October or March:	Outdoor Lighting - Environmental Impacts and Concerns
November:	IESNA Webcast
December:	Holiday Social
January:	Solid State Lighting (LED's)
February:	Lighting for Human Being's, Not Just for Eyeballs
March or October:	Outdoor Lighting – Environmental Impacts and Concerns
April:	2nd Annual IESNA – Yosemite Section Golf Tournament

As we value our membership's input, please feel free to contact any of our Officers, Board of Managers and/or Committee Chairs with any suggestions. In addition, if you would like to become more involved by participating as a Committee Chair please introduce your interest at your convenience.

Officers

Jay Marshall – President
Holophane 559-291-1256
jmarshall@holophane.com

Pete Chapman – Vice President
Cal Lighting 916-929-5111
pchapman@cal-lighting.com

Davor Golik – Secretary
DPG Engineering 559-276-5144
davor@dpgengineering.com

Richard Hardin – Treasurer
Hardin Engineering Group
559-323-4995 559-323-4996
rh@hardineng.com

Ron Naus, BK Lighting
559-438-5800
ron.naus@bklighting.com

Committee Chairs

Don Stockton – Membership Chair
559-454-8021
dstockton.cbc@lighting.net

The one thing that doesn't abide by
majority rule is a person's conscience.

Harper Lee, b 1926
American Novelist

**MOTHER LODE SECTION
SUSTAINING MEMBERS**

California Energy Commission	Gary Flamm
Capitol City Design	Tony Baker
City of Sacramento	Wes Hiratsuka
CJS Lighting	Robert O'Flaherty
Lighting By Design	Gale Spencer
Interface Engineering, Inc.	Stuart Lindsay
Lighting Systems	Keith Roberts
M. Neils Engineering, Inc.	Mike Neils
Sacramento Municipal Utility District	Connie Buchan



SOCIETY PRESIDENT (2006 – 2007)

Kevin Flynn
Kiku Obata & Company
6161 Delmar Blvd, Suite 200
St. Louis, MO 63112-1203
E-Mail: kflynn@kikuobata.com
Tel: 314-361-3110

**REGIONAL VICE PRESIDENT (2006-2009)
SOUTH PACIFIC COAST**

Thomas Grunwald
Holophane
16039 N 41st Place
Phoenix, AZ 85032
E-mail: tgrunwald@holophane.com
Telephone: 602-971-0461

**MOTHER LODE SECTION
2006-2007**

OFFICERS

PRESIDENT

John Hickman, LC; Hubbell Lighting, Inc.
916-412-6995 jhickman@hubbell-ltg.com

VICE PRESIDENT

Miguel Castellanos, ECOM Engineering
916-641-5600 mac@ecomeng.com

SECRETARY

Melissa Blevins, Ca. Lighting Technology Center
530-757-3452 mablevins@ucdavis.edu

TREASURER

Meggan Kessler, Holophane Lighting
916-670-6677 Meggan.Kessler@Holophane.com

BOARD OF MANAGERS

Doug Coleman, CAL Lighting
916-929-5111 dcoleman@cal-lighting.com

Owen Howlett, HMG
916-962-7001 howlett@h-m-g.com

Steve Sheckells, SMUD
916-732-6614 sshecke@smud.org

Juan Jose Villatoro, M. Neils Engineering Inc
916-923-4400 jjvillatoro@mneilsengineering.com

PAST PRESIDENT

Connie Buchan, SMUD
916-732-6404 connie.buchan@smud.org

COMMITTEE CHAIRS

IIDA – Doug Coleman, CAL Lighting

PROGRAMS – Miguel Castellanos, ECOM Engineering

MEMBERSHIP, HISTORIAN

Gale Spencer, Lighting By Design, 916-649-2220
litegal@surewest.net

PR/AWARDS, LANTERN - Gary Flamm, CEC
916-654-2817 gflamm@energy.state.ca.us

WEBMASTER - Abhijeet Pande, HMG
<http://www.iesmotherlode.org>

